



# The Eliot

## Patient Chair Range



 **MADE IN  
BRITAIN**



# The Eliot Patient Chair Range

---

Introducing the range of Eliot Patient Bedside Chairs. Setting a New Standard in Healthcare Seating. This ground-breaking addition to our extensive line of healthcare solutions was designed in collaboration with healthcare professionals and meticulously crafted by our development team in South Wales.

We have created the Eliot Chair with sustainability in mind, using fully recyclable materials. To add to that we are able to offer service and maintenance packages utilising our Product Support Team who are located regionally throughout the UK.

Each Eliot Chair model has been thoughtfully tailored to meet the diverse needs of healthcare environments and the comfort of users, both in healthcare settings and at home. Our open architecture design facilitates easy cleaning and maintenance, making it a practical choice for healthcare professionals. The Eliot chair is also optimised for use with slings and stand aids. Adjustable seat height and seat depth options provide a customised experience that prioritises user comfort.

One of the standout features of the Eliot Chair is its unique flip-arm design, which allows for swift patient evacuation in emergency situations, such as to carry out CPR. Additionally, the ability to reposition the arms upright, simplifies user transfers in and out of the chair, enhancing overall patient care and convenience.

For those seeking versatility and adaptability, our *DYNAMIC*® range includes removable seat pads to allow the placement of a dynamic seating cushion. By reversing the seat pad, users can easily adjust the seat depth, offering a tailored and comfortable seating experience that suits individual preferences.

The Eliot Patient Bedside Chair from Roma Medical fuses sustainability, functionality, and comfort into a single, innovative solution. Whether you're a healthcare facility looking to enhance patient care or an individual seeking a reliable and adaptable seating option, the Eliot Chair is your answer. Explore our range and experience the future of healthcare seating today.

# The Eliot *PATIENT CHAIR RANGE*

Navy

Duck Egg

## *FIXED ARM*

### The Eliot Chair 5570

Available in: 



### The Eliot *DYNAMIC*® 5772

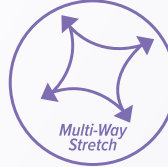
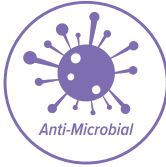
Available in: 



### The Eliot *RELATIVE*® 5707

Available in: 





Hyacinth

Chablis

## FLIP ARM

### The Eliot Chair 5771

Available in:



### The Eliot DYNAMIC® 5773

Available in:



### The Eliot PLUS® 5775

Available in:

Bariatric Chair





# The Eliot Chair

## Fixed Arm 5770

The robust and secure design of the Eliot Chair Fixed Arm allows the user to feel comfortable and supported.

With our contoured backrest and memory foam seat pad the chair allows for long periods of comfortable seating. (Gel seat option available)

### Specifications

Floor to Seat Pad Height: 400 - 500mm

Overall Height: 1160 - 1260mm

Overall Depth: 720mm

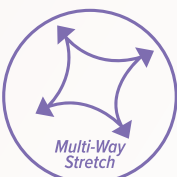
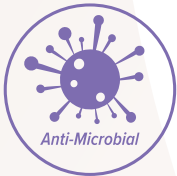
Overall Width: 600mm

Seat Depth: 460mm (490mm to back)

Seat Width: 460mm (470mm between arms)

Product Weight: 21kg

Max User Weight: 190kg (30st)



|                 |                 |
|-----------------|-----------------|
| <b>5770</b>     | <b>5770/HYC</b> |
| <b>5770/DEB</b> | <b>5770/CBS</b> |



Sacral Gap

Lacquered Wood Arm Pads

Pressure Relieving Memory Foam

Powder Coated Steel Frame

Height Adjustment Pin

Transit Castors



# The Eliot Chair

## Flip Arm 5771

The open architecture of the Chair allows for easy Hoist Sling and Stand Aid Access & Cleaning.

The flip up arms aid in the quick evacuation of patients to the floor, in the event CPR is required.

The ability to move the arms to an upright position allows easy transfer of users into or out of the chair.

5771

5771/HYC

5771/DEB

5771/CBS

### Specifications

Floor to Seat Pad Height: 400 - 500mm

Overall Height: 1160 - 1260mm

Overall Depth: 720mm

Overall Width: 600mm

Seat Depth: 460mm (490mm to back)

Seat Width: 460mm (470mm between arms)

Product Weight: 21kg

Max User Weight: 190kg (30st)



**THE ELIOT®**

\*Other seat options available see back page

\*\*Frame only option available for 5770/FRAME

This Chair meets BS 7176:2007

ISO 9001:2015 Accredited





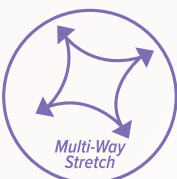
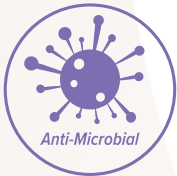
# The Eliot Chair

## DYNAMIC®

### Fixed Arm 5772

The robust and secure design of the Eliot Chair Fixed Arm allows the user to feel comfortable and supported.

With our contoured backrest and memory foam seat pad the chair allows for long periods of comfortable seating. (Gel seat option available). The product is made using sustainable, recyclable materials which are durable and easy to clean.



### Specifications

Floor to Seat Pad Height: 400 - 500mm

Overall Height: 1160 - 1260mm

Overall Depth: 720mm

Overall Width: 600mm

Seat Depth: 460mm (490mm to back)

Seat Width: 460mm (470mm between arms)

Product Weight: 21kg

Max User Weight: 190kg (30st)

5772

5772/HYC

5772/DEB

5772/CBS





# The Eliot Chair

**DYNAMIC®**

## Flip Arm 5773

The open architecture of the Chair allows for easy Hoist Sling and Stand Aid Access & Cleaning. The flip up arms aid in the quick evacuation of patients to the floor, in the event CPR is required. The ability to move the arms to an upright position allows easy transfer of users into and out of the chair.

The Seat Pad, when removed, can be stored behind the back rest, in the rack provided. The removable seat pads can be applied with a closed gap or open gap by rotating the seat pad, to adjust seat depth for your convenience. The removable seat also allows for the use of an air cushion & deep cleaning.

### Specifications

Floor to Seat Pad Height: 400 - 500mm

Overall Height: 1160 - 1260mm

Overall Depth: 720mm

Overall Width: 600mm

Seat Depth: 460mm (490mm to back)

Seat Width: 460mm (470mm between arms)

Product Weight: 21kg

Max User Weight: 190kg (30st)

|          |          |
|----------|----------|
| 5773     | 5773/HYC |
| 5773/DEB | 5773/CBS |



**DYNAMIC® ELIOT**

\*Other seat options available see back page

This Chair meets BS 7176:2007

ISO 9001:2015 Accredited





# The Eliot Chair PLUS®

## Bariatric 5775

The robust and secure design of the Eliot Plus Chair allows the user to feel comfortable and supported. With a Maximum weight capacity of 60st, this chair is suitable for a wide variety of patients.

With the addition of the ergonomic back contour built into the back rest, and the memory foam\* seat pad the chair allows for long periods of comfortable seating. (Gel seat option available).

### Specifications

Floor to Seat Pad Height: 400 - 500mm

Overall Height: 1140 - 1280mm

Overall Depth: 760mm

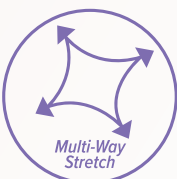
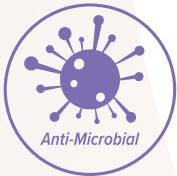
Overall Width: 680mm

Seat Depth: 540mm - 590mm

Seat Width: 680mm

Product Weight: 30kg

Max User Weight: 381kg (60st)



The open architecture of the Chair allows for easy Hoist Sling and Stand Aid Access & Cleaning. The flip up arms aid in the quick evacuation of patients to the floor, in the event CPR is required. The ability to move the arms to an upright position allows easy transfer of users into or out of the chair.

The seat can be adjusted forward increasing the distance between the seat and the seat back. Accommodating variable seat depths, particularly useful for a larger Gluteal Shelf. This product is made using sustainable, recyclable materials which are durable and easy to clean.

5775

5775/HYC

5775/DEB

5775/CBS



When the seat pad is fully extended the gap between the seat pad and the back rest allows for easy Hoist Sling and Stand Aid Access & Cleaning.



Flip Up & Depth Adjustable Seat

**PLUS<sup>®</sup>ELIOT**

\*Other seat options available see back page

This Chair meets BS 7176:2007

ISO 9001:2015 Accredited





# The Eliot Chair

## RELATIVE®

### Fixed Arm 5707

The robust and secure design of the Eliot Relative Chair allows the user to feel comfortable and supported. With a Maximum weight capacity of 25st, this chair is suitable for a wide variety of patients & relative.

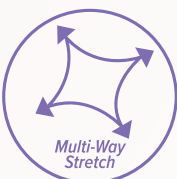
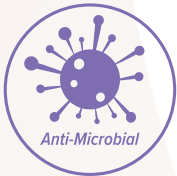
With the addition of the memory foam\* seat pad the chair allows for long periods of comfortable daily seating as well as an overnight stay. The product is made using sustainable, recyclable materials which are durable and easy to clean.

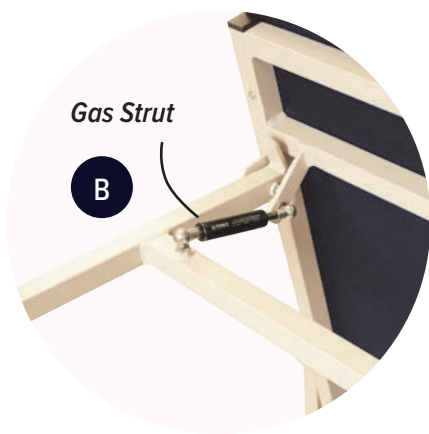
### Specifications

- Floor to Seat Pad Height: 455mm
- Overall Height: 1300mm
- Overall Width: 745mm
- Overall Length (Reclined): 1540mm
- Width (between arms): 645mm
- Seat Pad Depth: 470mm
- Seat Pad Width: 645mm
- Product Weight: 30kg
- Max User Weight: 159kg (25st)

**5707**

\* Only available in Navy





*This chair comes with many of the great features of the Standard Eliot Chair with the added convenience of converting into a 3/4 length overnight couch.*

*The Eliot Relative chair is not only a great bedside addition for patients but it also allows relatives a comfortable option when staying with loved ones. This is particularly useful in paediatric wards and palliative care settings.*

*The relative chair is easy to convert with just a few simple steps.*

1. *Lift the additional support leg (A) at the back of the chair to the open position. The leg will be supported in the open position by the gas strut (B)*
2. *Using the support legs (A) to lift the backrest (C) upwards until it is unlocked from the base.*
3. *Lower the backrest down to create a flat 3/4 couch (D).*
4. *This operation can be made easier by placing your foot on the foot stop (E).*



**RELATIVE<sup>®</sup>ELIOT**

\*Other seat options available see back page

This Chair meets BS 7176:2007

ISO 9001:2015 Accredited



# Why choose the Eliot Chair?

## Sustainable Material Guarantee

Roma Medical is proud to be Environmental Management certified. All of the products under The Eliot chair range are made with sustainable and recyclable materials that are durable and easy to clean. In order to improve the service life of our products we are able to offer service and maintenance agreements.

## Unique Features

### Height Adjustable

The height adjustment caters for pressure area care on the heels and sacral area to accommodate varying patient heights. The transit castor enables easy transportation of the chair. The chair can also be adjusted to incline for added patient comfort and remains completely stable even at maximum adjustment.



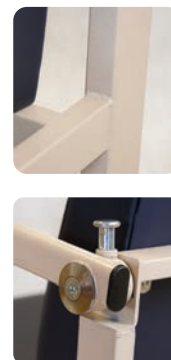
### Open Architecture

The open architecture of the chair allows safe and easy patient evacuation. The gap between seat base and back enables sling access for hoisting and ease of cleaning.



### Laser Welding

Our laser welding technique allows for a high quality and durable finish on our products.



### Removable Seat

Designed with convenience in mind, the Eliot Dynamic chair's removable seat allows for the placement of a dynamic air cushion if required. Having an added bracket behind the back rest of the chair allows for convenient storage and ensures the seat pad and chair remain together. Additionally by rotating the seat pad from front to back allows two seat depth options.



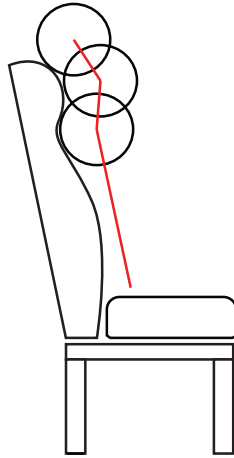
### \*Optional Extras

The Eliot chair range comes with the memory foam seat pads as standard. We can offer the gel seat pad option as an extra. For individuals who spend long periods of time sitting, the gel seat pad is a great option providing maximum cushioning and support, offering increased comfort and reduced risk of pressure sores.

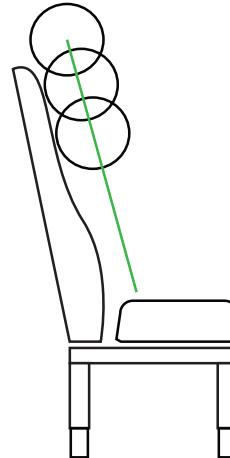


## Ergonomic Back Contour

The ergonomic design of the Eliot chair prioritises head position, neck and spine alignment.



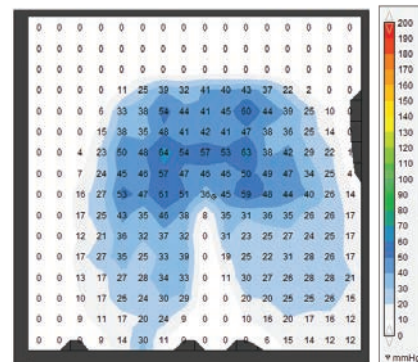
The first Diagram shows how over-contoured back promotes neck misalignment with varying user height.



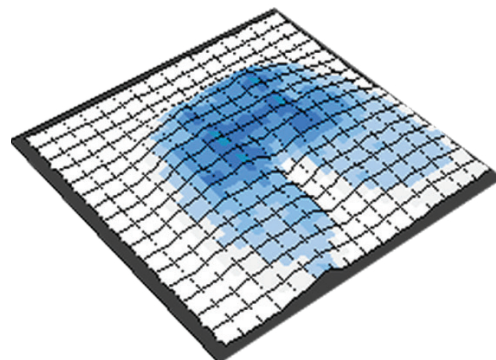
The second diagram shows how a smooth back contour ensures correct neck and spinal alignment with the Eliot Chair.

## Pressure Mapping

The seat pad is comprised of the base, the core foam inner layer, the memory foam top layer and is upholstered with Vyflex Plus four way stretch medical material. All the components combine to create a symbiotic relationship enhancing pressure area care. This is illustrated in the pressure mapping diagram and data below.



|                                 |         |
|---------------------------------|---------|
| Minimum (mmHg)                  | 0.00    |
| Maximum (mmHg)                  | 63.84   |
| Average (mmHg)                  | 18.73   |
| Variance (mmHg <sup>2</sup> )   | 332.37  |
| Standard deviation (mmHg)       | 18.23   |
| Coefficient of variation (%)    | 97.34   |
| Horizontal centre (cm)          | 25.32   |
| Vertical centre (cm)            | 20.97   |
| Sensing area (cm <sup>2</sup> ) | 2070.25 |
| Regional distribution           | 100.00  |





York Road, Bridgend Industrial Estate, Bridgend, CF31 3TB  
Tel. 01656 674488 | Fax. 01656 674499 | Email. [sales@romamedical.co.uk](mailto:sales@romamedical.co.uk) | Web. [www.romamedical.co.uk](http://www.romamedical.co.uk)